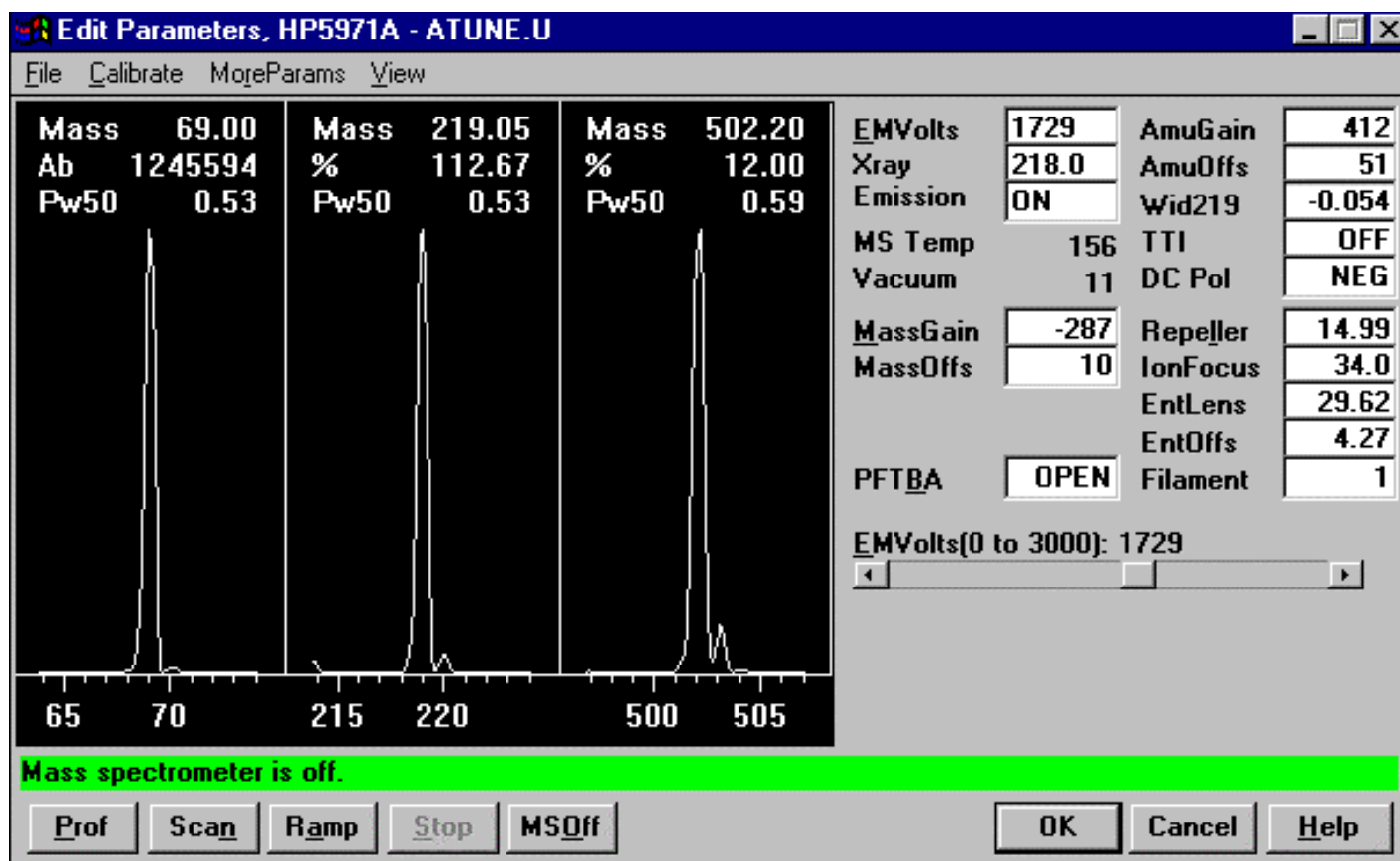


**CSS TrueHED<sup>®</sup> OFF**

Note that none of the tune parameters changed. We simply flipped the HED switch on. Observe the magnitude of the increases in abundances of the three tune ions: 69, 219, 502. Observe that the peak shapes are the same and that noise has not increase with the signal.



**CSS TrueHED<sup>®</sup> ON**